

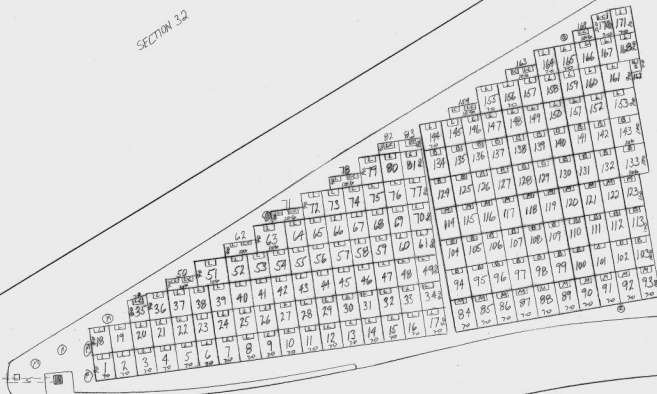
SECTION 31

1"=20' K&P 7-2-87

- L-C - CREMATED REMAINS ONLY- LEVEL MARKER PRIVILEGE
- B-C - CREMATED REMAINS ONLY - 12" BEVEL MARKER PRIVILEGE
- M-C - CREMATED REMAINS ONLY-MONUMENT OR BEVEL MARKER PRIVILEGE 12" BASE
- L - LEVEL MARKER PRIVILEGE
- B - BEVEL MARKER PRIVILEGE 12" MINIMUM
- M - MONUMENT OR BEVEL MARKER PRIVILEGE 12" BASE OR BEVEL
- LOTS 1-436- MARKER TO HEAD OF GRAVE- FOOT TO ROAD

LOTS 437-442- MARKER TO FOOT OF GRAVE- HEAD TO ROAD

SECTION 32



SECTION 30

